

Student Survey on Preparedness for Responsible AI Use in Learning

Justin Gu

14/11/2025

Purpose of Survey

This survey is designed to investigate how prepared secondary students feel to use artificial intelligence (AI) as a learning tool. It focuses on students' ability to question AI outputs, judge reliability, use AI without overdependence, and identify what support schools should provide.

This survey will be conducted with students from the following participating schools:

- Parramatta High School
- Epping Boys High School
- Sydney Technical High School

Instructions

Please answer the questions honestly. Your responses are anonymous. There are no right or wrong answers. For multiple choice questions, circle the option that best matches your view. For short answer questions, write your response in the space provided.

Survey Questions

1. How often do you use AI to help you learn or study?

- A. Very often
- B. Sometimes
- C. Rarely
- D. Never

2. When AI gives you an answer, how likely are you to check whether it is accurate?

- A. Very likely
- B. Somewhat likely
- C. Not very likely
- D. Not at all likely

3. How confident are you in telling when an AI response might be unreliable or incomplete?

- A. Very confident
- B. Somewhat confident
- C. Slightly confident
- D. Not confident at all

4. Which of the following best describes how you usually use AI for schoolwork?

- A. To help me understand ideas
- B. To improve or check my work
- C. To save time when I am stuck
- D. I generally do not use AI for schoolwork

5. Do you think relying too much on AI could reduce your own independent thinking over time?

- A. Yes, definitely
- B. Probably
- C. Probably not
- D. No

6. What kind of school support would be most useful for helping students use AI well?

- A. Clear classroom examples
- B. Practical lessons on checking AI answers
- C. Written school guidelines
- D. Teacher discussion about when AI use is appropriate

7. What do you think students should be taught before using AI for school learning?

8. In what ways can AI be helpful for learning, rather than just completing work faster?

9. What risks do students face if they trust AI too easily?

10. What would help you use AI more thoughtfully and responsibly in your own learning?

Results

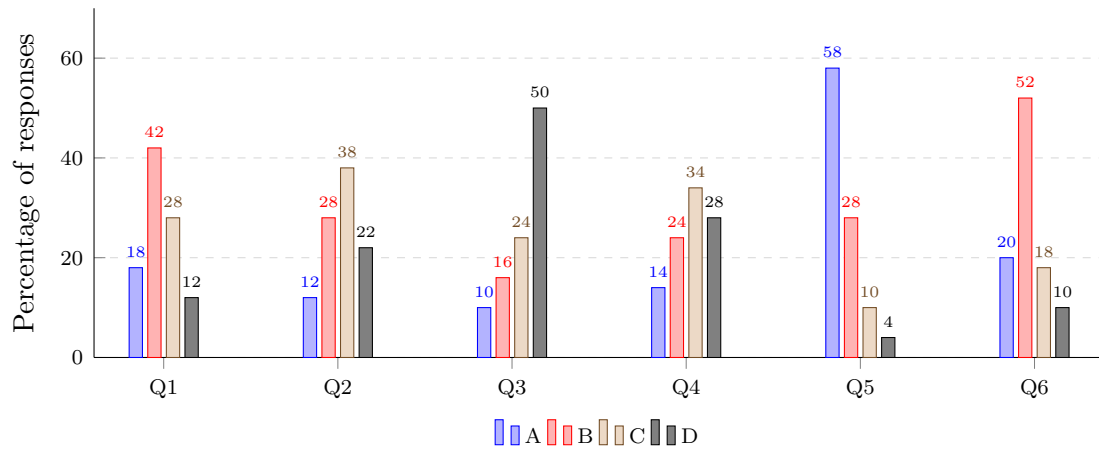


Figure 1: Visual distribution of answers for Q1–6

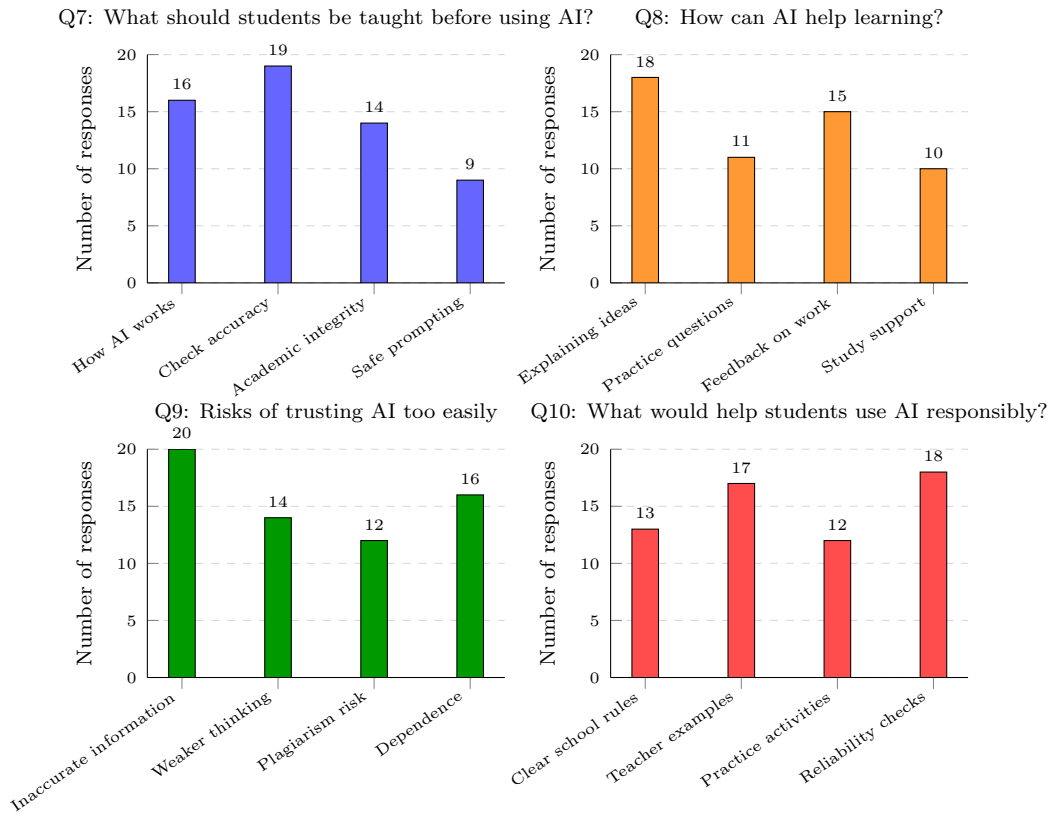


Figure 2: Hypothetical thematic analysis of short-answer responses